

Tiara

HEADBOARD "MORPHEUS" COLLECTION

Designers UNICA

Product features Headboard composed by five extra-clear, tempered shaped glass sheets, thickness 10 mm. each, with sandblasting, gold coloured leaf and digital printing.

Metal frame covered with gold coloured leaf. Upper plates welded to the frame with application of crystals on the top.

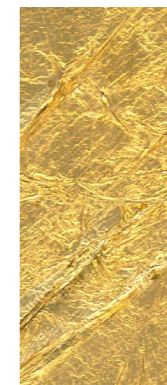
Dimensions L. 290 cm H. 175 cm

Weight 285 Kg

Top



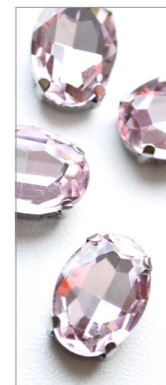
Sandblasting



Gold coloured leaf

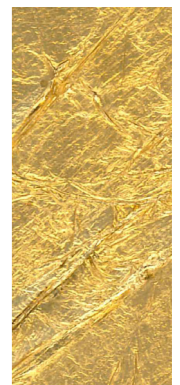


Digital printing



Crystals

Base



Gold coloured leaf